

WINTER 2027-28

Between reality and dreaming, a new balance emerges.

Rooted in tradition, shaped by well-dressed elegance and softened by a longing for comfort, the season invites us to slow down and rediscover what truly matters.

From the urban refinement of *Office Lounge* and the timeless sophistication of *Aesthetic Vibes*, to the natural serenity of *Natural Ease* and the protective embrace of *Outerwear*, each story captures a different way of living, feeling and dreaming.

We create with passion and expertise.

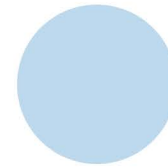
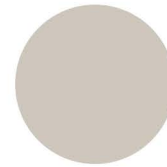
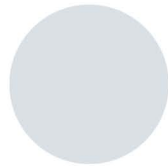
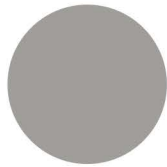
Welcome to Tekstina world.

tekstina
SINCE 1828

Office Lounge

Balancing tradition with comfort, Office Lounge combines classic influences with an easy-wearing, contemporary approach.

Look: Urba – city look, well dressed. Tailoring is softened by supple fabrics and relaxed fits, bringing comfort to every-day life.



Colour mood: Cool, clean and safe with touch accent.

Design: Structure, stripes, check and micro patterns with twist.

Fabrics: Prints developed on selected performance knit fabrics.

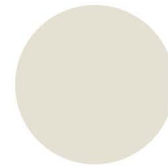
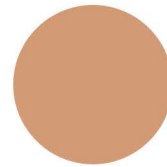
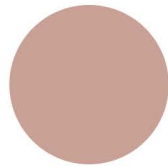
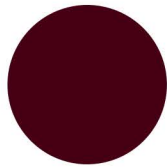


1 - Ragbone 2 - Classic Icons Reimagined for Modern Living Everatti Electric Classic Mini

Aesthetic Vibes

Inspired by the art of dressing up, tailoring, elegance and timeless chic, Aesthetic Vibes celebrates refined sophistication with a contemporary attitude.

Look: Urban city dressing with an elegant and chic appearance.



Colour mood: A warm colour palette featuring a new range of red tones, complemented by a classic foundation of blue, grey and beige shades in tonal colour harmonies.

Design: Clean stripes, cravat-inspired patterns, checks and paisley motifs.

Fabrics: Prints developed on selected fabrics that create a rich and sophisticated look, including double-face twills, viscose qualities and dobby fabrics.

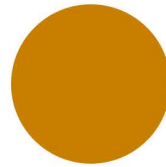
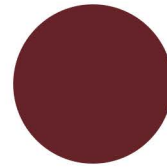
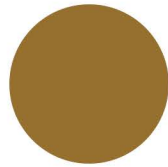
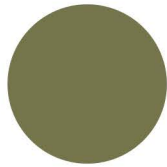
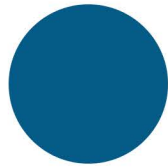


1, 3 - Saint Laurent 2 - Dolce&Gabbana 4 - Fashion by Dior 5 - Artdeco - 1228 Madison Prewar Manhattan

Natural Ease

Inspired by the countryside way of life, Natural Ease embraces nature-inspired harmony, wellbeing and a slower pace of living. Rooted in rustic simplicity, it evokes a sense of quietness, comfort and romantic charm.

Look: Casual urban wear with a soft, relaxed attitude.



Colour mood: A warm, earthy palette of natural shades, ranging from browns and greens to reddish terracotta tones.

Design: Piece-dyed solid colours on selected fabrics, complemented by textures, checks, floral motifs and denim-inspired looks.

Fabrics: Prints developed on a wide selection of carefully chosen cotton fabrics, including baby cord, dobby and melange qualities.



1 - 4 O. Tiger 5 - Auralee 6 - L. Piana 7 - Seagull-cottage Wicklowireland-Ireland-Architectural Farm

Outerwear

Inspired by the outdoors, city living and utilitarian workwear, Outerwear brings together functionality, protection and contemporary style. The focus shifts away from classic tailoring towards versatile outerwear pieces designed to adapt to modern lifestyles and changing environments.

Colour mood: Early mid-tones and natural shades, creating a warm and grounded colour palette.

Look: Warm casual urban wear with a practical yet refined attitude. Layered silhouettes designed for life in the city and beyond.

Design: Checks, solid colours and textured surfaces inspired by workwear and outdoor apparel.

Fabrics: Prints developed on cotton twill qualities, combining durability, comfort and everyday versatility.



1 - Ami Paris 2 - Wax London